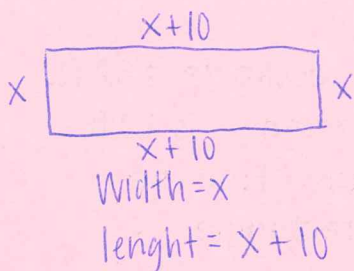


Perimeter Problems

Warm-up: write the algebraic expression:

1. Twice a number $2x$
2. Four more than 3 times a number $4+3x$ OR $3x$
3. Ten less than a number $x-10$
4. Six greater than a number $6+x$ OR $x+6$



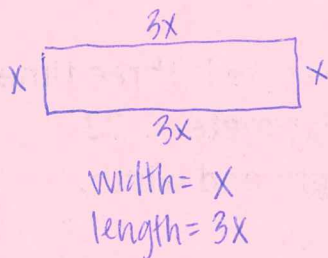
$$x + x + 10 + x + x + 10 = 52$$

$$4x + 20 = 52$$

$$4x = 32$$

$$x = 8$$

width = 8 ft.
length = 18 ft

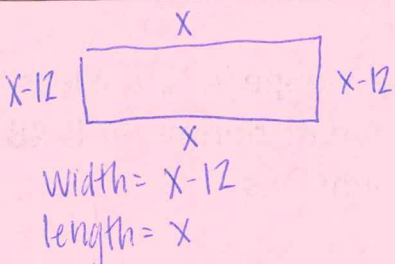


$$x + 3x + x + 3x = 88$$

$$8x = 88$$

$$x = 11$$

width = 11 in.
length = 33 in.



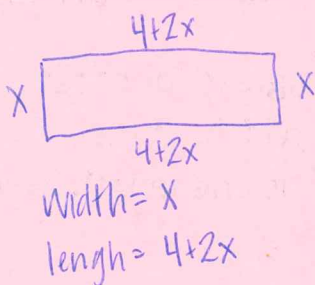
$$x + x - 12 + x + x - 12 = 48$$

$$4x - 24 = 48$$

$$4x = 72$$

$$x = 18$$

width = 6 cm
length = 18 cm



$$x + 4 + 2x + x + 4 + 2x = 110$$

$$6x + 8 = 110$$

$$6x = 102$$

$$x = 17$$

width = 17 ft
length = 38 ft.