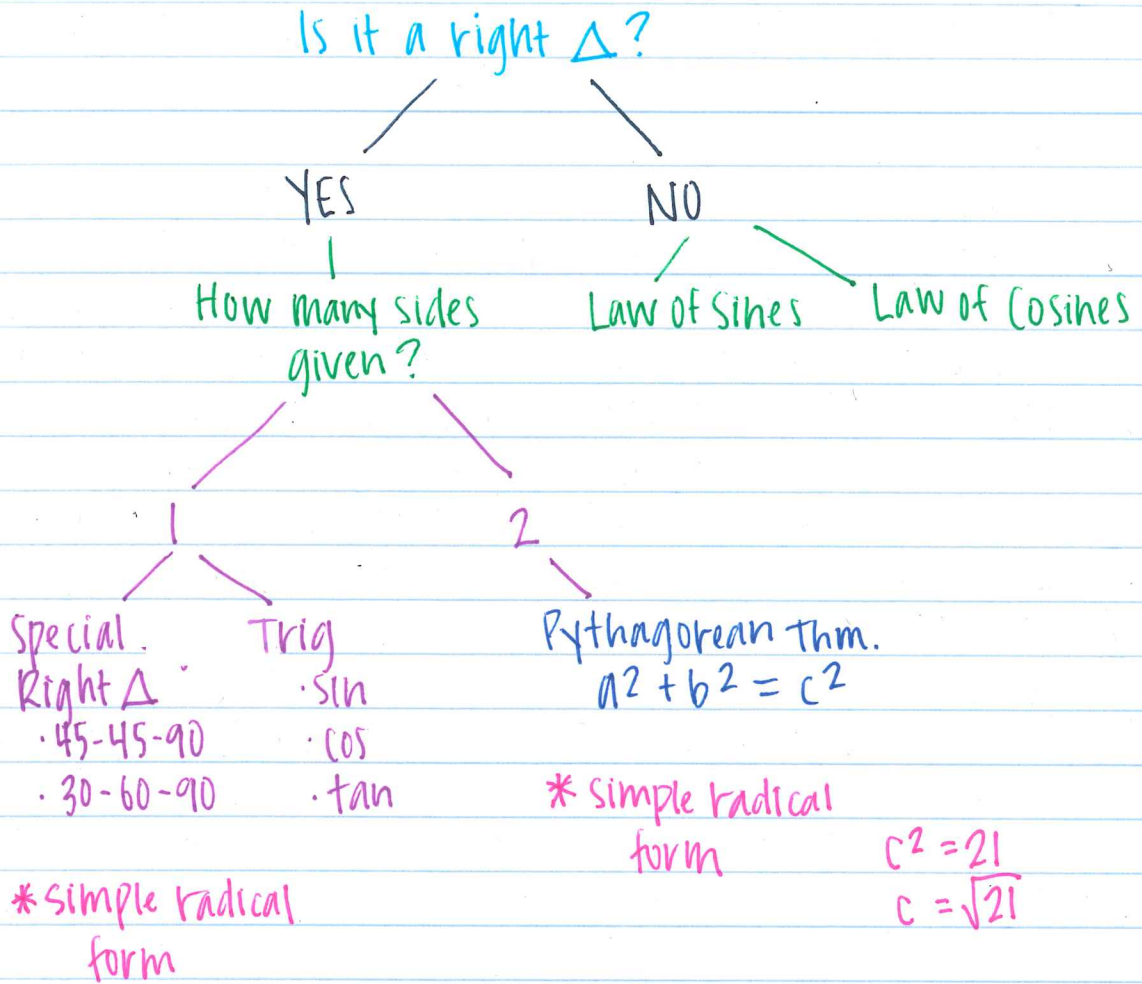


TEST REVIEW



- Finding an \angle (inverse) \sin^{-1} \cos^{-1} \tan^{-1}
- Angles of Elevation/Depression
- Determine if a Δ is right, acute, obtuse

$$a^2 + b^2 = c^2 : \text{right}$$
$$a^2 + b^2 > c^2 : \text{acute}$$
$$a^2 + b^2 < c^2 : \text{obtuse}$$