

1. $\frac{5\pi}{4}$

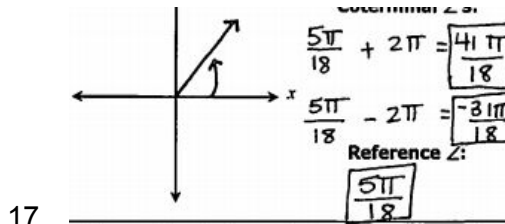
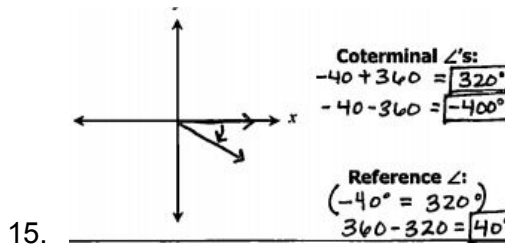
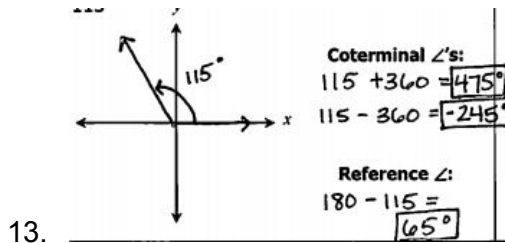
3. $\frac{-17\pi}{12}$

5. $\frac{5\pi}{12}$

7. 345

9. 15

11. -90



$\sin \theta = \frac{12}{13}$	$\csc \theta = \frac{13}{12}$
$\cos \theta = \frac{-5}{13}$	$\sec \theta = -\frac{13}{5}$
$\tan \theta = -\frac{12}{5}$	$\cot \theta = -\frac{5}{12}$

19.

$\sin \theta = \frac{-6}{3\sqrt{5}} = -\frac{2\sqrt{5}}{5}$	$\csc \theta = \frac{3\sqrt{5}}{-6} = -\frac{\sqrt{5}}{2}$
$\cos \theta = \frac{3}{3\sqrt{5}} = \frac{\sqrt{5}}{5}$	$\sec \theta = \frac{3\sqrt{5}}{3} = \sqrt{5}$
$\tan \theta = \frac{-6}{3} = -2$	$\cot \theta = \frac{3}{-6} = -\frac{1}{2}$

21.