

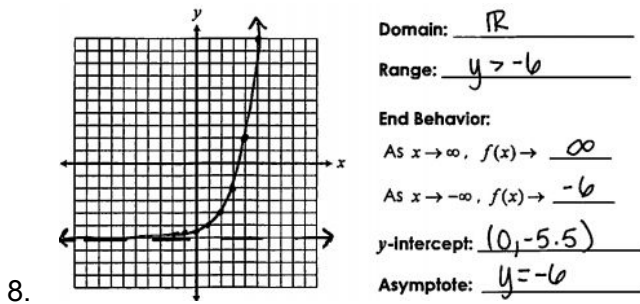
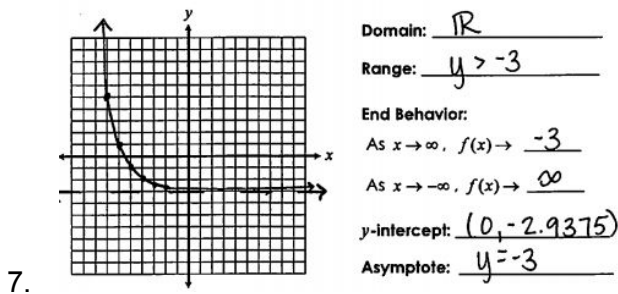
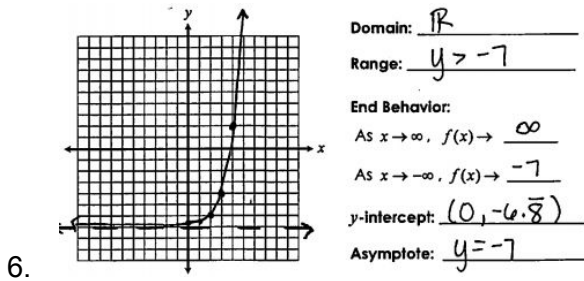
1. Growth
2. Growth
3. Decay

a) $f(x) = (4/5)^x$

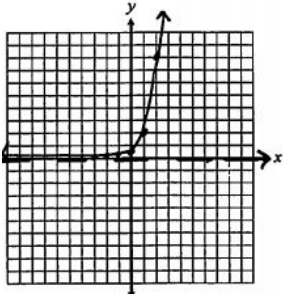
4. b) left 2

a) $f(x) = 2^x$

5. b) reflected over x, right 1,
vert. stretch by 3, up 7



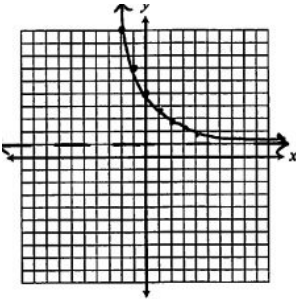
9.

Domain: \mathbb{R} Range: $y > 0$

End Behavior:

As $x \rightarrow \infty$, $f(x) \rightarrow \infty$ As $x \rightarrow -\infty$, $f(x) \rightarrow 0$ y-intercept: $(0, 1/2)$ Asymptote: $y = 0$

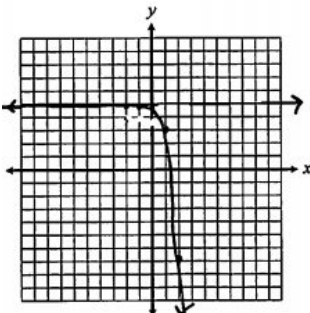
10.

Domain: \mathbb{R} Range: $y > 1$

End Behavior:

As $x \rightarrow \infty$, $f(x) \rightarrow 1$ As $x \rightarrow -\infty$, $f(x) \rightarrow \infty$ y-intercept: $(0, 5)$ Asymptote: $y = 1$

11.

Domain: \mathbb{R} Range: $y < 5$

End Behavior:

As $x \rightarrow \infty$, $f(x) \rightarrow -\infty$ As $x \rightarrow -\infty$, $f(x) \rightarrow 5$ y-intercept: $(0, 4.\bar{6})$ Asymptote: $y = 5$